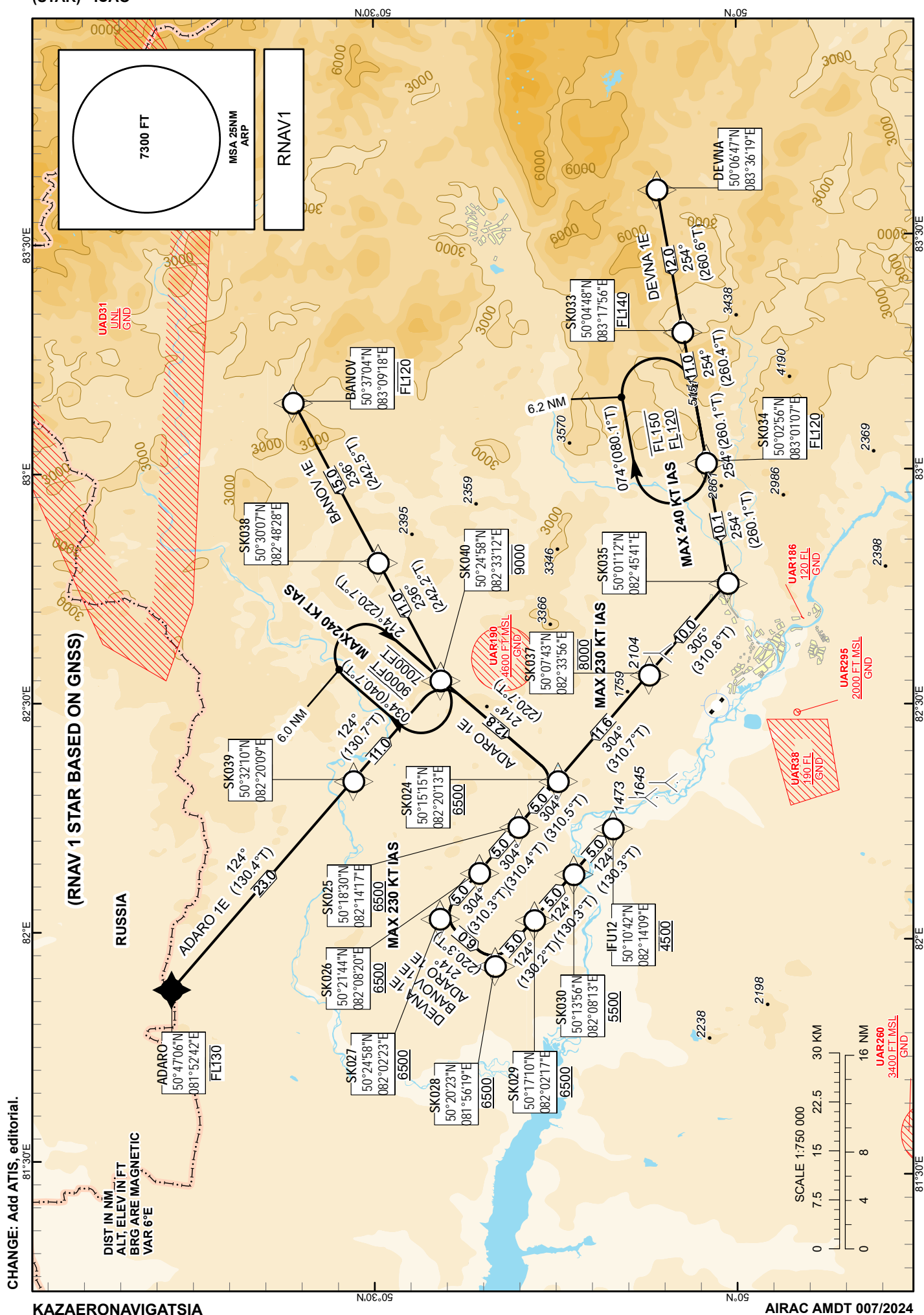


UST-KAMENOGORSK
RWY 12



TABULAR DESCRIPTION

Serial Number	Path Descriptor	Waypoint Identifier	Fly - over	Course °M(°T)	Magnetic Variation(°)	Distance NM	Turn Direction	Altitude FT	Speed KT	VPA (°)	Navigation Specification
ADARO 1E											
10	IF	ADARO	-	-	+6.3	-	-	-FL130	-	-	RNAV 1
20	TF	SK039	-	124(130.4)	+6.3	23.0	L	-	-	-2	RNAV 1
30	TF	SK040	-	124(130.7)	+6.3	11.0	-	-9000	-	-1.7	RNAV 1
40	TF	SK024	-	214(220.7)	+6.3	12.8	R	+6500	-230	-1.5	RNAV 1
50	TF	SK025	-	304(310.5)	+6.3	5.0	R	+6500	-230	0	RNAV 1
60	TF	SK026	-	304(310.4)	+6.3	5.0	-	+6500	-	0	RNAV 1
70	TF	SK027	-	304(310.3)	+6.3	5.0	-	+6500	-	0	RNAV 1
80	TF	SK028	-	214(220.3)	+6.3	6.0	L	+6500	-	0	RNAV 1
90	TF	SK029	-	124(130.2)	+6.3	5.0	L	+6500	-	0	RNAV 1
100	TF	SK030	-	124(130.3)	+6.3	5.0	-	+5500	-	0	RNAV 1
110	TF	IFU12	-	124(130.3)	+6.3	5.0	-	@4500	-	-2.8	RNAV 1
BANOV 1E											
10	IF	BANOV	-	-	+6.3	-	-	-FL120	-	-	RNAV 1
20	TF	SK038	-	236(242.5)	+6.3	15.0	R	-	-	-2.5	RNAV 1
30	TF	SK040	-	236(242.2)	+6.3	11.0	-	-9000	-	-1.7	RNAV 1
40	TF	SK024	-	214(220.7)	+6.3	12.8	L	+6500	-230	-1.5	RNAV 1
50	TF	SK025	-	304(310.5)	+6.3	5.0	R	+6500	-230	0	RNAV 1
60	TF	SK026	-	304(310.4)	+6.3	5.0	-	+6500	-	0	RNAV 1
70	TF	SK027	-	304(310.3)	+6.3	5.0	-	+6500	-	0	RNAV 1
80	TF	SK028	-	214(220.3)	+6.3	6.0	L	+6500	-	0	RNAV 1
90	TF	SK029	-	124(130.2)	+6.3	5.0	L	+6500	-	0	RNAV 1
100	TF	SK030	-	124(130.3)	+6.3	5.0	-	+5500	-	0	RNAV 1
110	TF	IFU12	-	124(130.3)	+6.3	5.0	-	@4500	-	-2.8	RNAV 1
DEVNA 1E											
10	IF	DEVNA	-	-	+6.3	-	-	-	-	-	RNAV 1
20	TF	SK033	-	254(260.6)	+6.3	12.0	L	+FL140	-	0	RNAV 1
30	TF	SK034	-	254(260.4)	+6.3	11.0	-	+FL120	-	-1.7	RNAV 1
40	TF	SK035	-	254(260.1)	+6.3	10.1	-	-	-	-1.9	RNAV 1
50	TF	SK037	-	305(310.8)	+6.3	10.0	R	@8000	-	-1.9	RNAV 1
60	TF	SK024	-	304(310.7)	+6.3	11.6	-	+6500	-230	-1.6	RNAV 1
70	TF	SK025	-	304(310.5)	+6.3	5.0	-	+6500	-230	0	RNAV 1
80	TF	SK026	-	304(310.4)	+6.3	5.0	-	+6500	-	0	RNAV 1
90	TF	SK027	-	304(310.3)	+6.3	5.0	-	+6500	-	0	RNAV 1
100	TF	SK028	-	214(220.3)	+6.3	6.0	L	+6500	-	0	RNAV 1
110	TF	SK029	-	124(130.2)	+6.3	5.0	L	+6500	-	0	RNAV 1
120	TF	SK030	-	124(130.3)	+6.3	5.0	-	+5500	-	-2.8	RNAV 1
130	TF	IFU12	-	124(130.3)	+6.3	5.0	-	@4500	-	0	RNAV 1

WAYPOINT LIST

ADARO 1E		
Waypoint Identifier	Coordinates	
ADARO	504706.00N	0815242.00E
SK039	503209.70N	0822009.48E
SK040	502458.18N	0823312.37E
SK024	501515.44N	0822012.72E
SK025	501829.89N	0821416.83E
SK026	502144.03N	0820820.13E
SK027	502457.87N	0820222.63E
SK028	502023.28N	0815619.46E
SK029	501709.76N	0820216.80E
SK030	501355.92N	0820813.34E
IFU12	501041.78N	0821409.08E
BANOV 1E		
Waypoint Identifier	Coordinates	
BANOV	503704.00N	0830918.00E
SK038	503007.16N	0824827.90E
SK040	502458.18N	0823312.37E
SK024	501515.44N	0822012.72E
SK025	501829.89N	0821416.83E
SK026	502144.03N	0820820.13E
SK027	502457.87N	0820222.63E
SK028	502023.28N	0815619.46E
SK029	501709.76N	0820216.80E
SK030	501355.92N	0820813.34E
IFU12	501041.78N	0821409.08E
DEVNA 1E		
Waypoint Identifier	Coordinates	
DEVNA	500647.00N	0833619.00E
SK033	500448.02N	0831756.25E
SK034	500256.48N	0830107.45E
SK035	500111.78N	0824541.27E
SK037	500742.91N	0823355.72E
SK024	501515.44N	0822012.72E
SK025	501829.89N	0821416.83E
SK026	502144.03N	0820820.13E
SK027	502457.87N	0820222.63E
SK028	502023.28N	0815619.46E
SK029	501709.76N	0820216.80E
SK030	501355.92N	0820813.34E
IFU12	501041.78N	0821409.08E